

# TD-4000/TD-4100N

## Commercial Thermal Printer for labels, receipts and tags

- High-quality, 300 DPI resolution is great for printing fine text, graphics, barcodes and logos.
- Built-in auto cutter allows labels and receipts of various lengths to be printed from continuous label or die-cut rolls.
- USB and serial interfaces are standard on both printers for optimized Windows printing. Compatible with Windows 7 \*\*

### Technical Specifications

#### Hardware

Roll compatibility	RD rolls (die-cut and continuous)
Print technology	Direct thermal
Maximum label width	102 mm
Maximum print height	98.6mm
Minimum print length	25 mm
Print resolution	300 DPI
Max. print speed	110 mm / second
Template Transfer	2048KB / Max 99 templates
Emulation	Raster mode, ESC/P mode, P-touch Template mode
Roll end detection	Yes
Interfaces	USB (ver 2.0 full speed) RS-232C serial (9 pin) Ethernet (10/100 Base-TX) (TD-4100N only)
Cutter Type	Full automatic
Power	220-240V ~ 50/60Hz (internal power supply)
Colour	Light grey & pearl white

#### Software: P-touch Editor 5

Font support / fonts supplied	All installed TrueType fonts / 17
Font styles	11 styles: Normal, Bold, Italic, Outline, Shadow, Shadow Light, Horizontal, Surround, Frame Out, Inverted Text, Underline
Number of frames	126
Image file formats support	BMP, JPG, JPEG, PNG, TIF, GIF, DIB, WMF, EMF, ICO
Screen capture	Yes
Min. / max. label length	1 metre
Tape margin settings	3 mm - 126 mm
Multi line printing	Yes
Multi block printing	Yes
Vertical printing	Yes
Rotate printing	Yes
Number of copies	9999
Mirror printing	Yes
Sequential numbering	1 - 9999 / A - Z / a - z
Barcode protocols	CODE39, CODE128, UCC/EAN-128(GS1-128), ITF(I-2/5), CODABAR(NW-7), UPC-A, UPC-E, EAN13(JAN13), EAN8, ISBN-2(EAN13 AddOn2), ISBN-5(EAN13 AddOn5), POSTNET, Laser Bar Code, GS1 DataBar(RSS)(GS1 DataBar Omnidirectional,GS1 DataBar Truncated,GS1 DataBar Stacked,GS1 DataBar Stacked Omnidirectional,GS1 DataBar Limited,GS1 DataBar Expanded,GS1 DataBar Expanded Stacked), PDF417(Standard, Truncated, Micro), QR Code(Model 1, Model 2, Micro), Data Matrix(ECC200 Square, ECC200 Rectangular), MaxiCode(Model2, Model3, Model4, Model5)
Database / file link support	csv, txt, mdb, xls, Microsoft SQL Server Database
Microsoft® Office add-in support	Microsoft Word / Excel / Outlook (Office 2000/2003/2007/2010)
Date and Time Printing	Yes
Languages	English / Danish / Dutch / French / German / Italian / Norwegian / Portuguese / Spanish / Swedish / Finnish / Czech / Polish / Hungarian / Simplified Chinese / Russian / Turkish / Japanese

- Built-in Ethernet port on the TD-4100N allows multiple users to share one printer.
- Five resident fonts and 14 linear and two-dimensional barcode symbologies.
- Print from non-Windows applications via the USB, serial and Ethernet interfaces using ESC/P emulation or ASCII data.

#### System requirements

Operating systems	Microsoft Windows XP® Windows Vista® 32 bit & 64 bit Windows 7® 32 bit & 64 bit Windows Server® 2003 x86 (TD-4100N only) Windows Server® 2008 / 2008 R2 (TD-4100N only)
Hard disk space	More than 70MB
Memory	Microsoft® Windows® XP : 128MB minimum Windows Vista® : 512MB minimum Windows 7® 32 bit : 1 GB (minimum) Windows 7® 64 bit : 2 GB (minimum) Windows Server® 2003 : 256MB minimum (TD-4100N only) Windows Server® 2008 : 512MB minimum (TD-4100N only)
Graphics adapter	SVGA with 16 bit colour depth minimum
Others	CD-ROM drive for installation

#### Included Items

Included Items	Label printer 102mm continuous black on white label roll (2 metre starter roll) Die-cut 51mm x 26mm Labels (60 Labels) AC power cable USB cable CD-ROM containing software, drivers and user guide
----------------	---

#### Supplies

RD Rolls	
RD-S02C1	Die-cut Labels 102 x 152mm
RD-S03C1	Die-cut Labels 102 x 50mm
RD-S04C1	Die-cut Labels 76 x 25mm
RD-S05C1	Die-cut Labels 50 x 25mm
RD-S01C2	Continuous 102mm wide

#### Weights and Dimensions

Dimensions	173 mm (W) x 229 mm (D) x 158 mm (H)
Weight	TD-4000: 1.81 kg / TD-4100N: 1.83 kg

\*\*Printer drivers for Windows 7 can be downloaded from the Brother Solutions Center at <http://solutions.brother.com>

Contact :

**brother**  
at your side



**Brother International (Aust) Pty Ltd**  
Level 3, Building A, 11 Talavera Road, Macquarie Park, NSW 2113  
Tel: +61(2)9887 4344 Fax: +61(2) 9888 9707

Website: [www.brother.com.au](http://www.brother.com.au)  
All specifications correct at time of printing. Brother is a registered trademark of Brother Industries Ltd.  
Brand product names are registered trademarks or trademarks of their respective companies.

Working with you for a better environment  
[www.brotherearth.com](http://www.brotherearth.com)



## TD-4000 / TD-4100N Commercial Thermal Printer for Labels, Receipts and Tags

High specification, high speed label printers that include barcode label design software, built-in cutters and networking.

- Accepts up to 102mm wide labels
- Fast 110 mm/second print speed
- Powerful barcode label design software included
- Design, upload and print pre-designed label templates
- Print from various operating systems/software using Brother ESC/P printer language

## Professional label printers

Brother has been developing label printing technology for more than twenty years, and the TD-4000 and TD-4100N both offer the ability to print high quality labels on demand, whatever the label requirement. Printing labels up to 102 mm in width, and at a speed of up to 110 mm/second, these two fully featured machines also offer a built-in cutter as standard to avoid the need of a cumbersome tear-bar. Furthermore, you can create labels of any length, from 25 mm right up to 1 metres, by installing a continuous label roll and cutting to the correct size.

	TD-4000	TD-4100N
Print resolution of 300 dpi	✓	✓
Print speeds of up to 110 mm/second	✓	✓
Accepts label rolls up to 102mm in width	✓	✓
Easy installation of label rolls	✓	✓
Professional label design software included	✓	✓
Built-in cutter	✓	✓
Print up to 9,999 labels per print job*	✓	✓
Supports over 15 popular 1D & 2D barcode protocols*	✓	✓
Link to data in .xls, .mdb files & SQL server databases*	✓	✓
Automatic date/time printing capability*	✓	✓
Advanced image dithering for high-quality images*	✓	✓
Network ready		✓
Network printer administration software included		✓
Windows Server 2003 support		✓
Windows Server 2008 support		✓

\* Using Ptouch Editor 5 label design software

## Applications:

### Warehouse:

- Shelves and bins
- Shipping labels
- Pallet and case identification
- Aisles and racks
- Product identification

### Retail:

- Receipt printing
- Returned goods
- Item and shelf
- Retail pharmacy
- Nutrition and Ingredients labels
- Markdowns

### Post and Parcel:

- Shipping and Receiving
- Instructions and Warnings
- Returned goods
- Tracking and Routing
- Compliance labeling

### Manufacturing:

- Work-in-process
- Finished goods inventory
- Prototype packaging
- Short-run production
- Quality control

### Healthcare:

- In-house pharmacy
- Patient identification
- Laboratory specimens
- Pathology/Histology slides
- Asset and inventory management



Connect the TD-4100N to a nearby network point, so machine can be sited wherever the labels are required

## Brother RD label rolls

**Brother RD label rolls** The TD-4000 and TD-4100N use Brother RD labels. Available in die-cut and also continuous length rolls, they offer high quality printing, added protection against marking and scuffing and are available in various sizes. In addition to the standard die-cut rolls found on most label printers, you also have the flexibility to use continuous length rolls with the built-in cutter to make labels and signs up to one metre in length, you get less printer downtime and more staff productivity.

## Efficiency

**Powerful software** P-touch Editor label design software is included as standard, giving you the ability to create any label required, without the additional cost of purchasing label design software. It supports the most common 1D and 2D barcode protocols, importing of graphic images, and even merging of data contained in Excel and MSDE/SQL databases onto your labels.

**Built-in networking** The professional and reliable method of connecting label printers is typically via a network, and the TD-4100N incorporates a 10/100 Base TX network port as standard. By giving the opportunity to locate the label printer away from the PC, you have the advantage of being able to place the label printer wherever your labels are required. And of course, networking offers the ability for any number of users or computers to print their labels to the same label printer.

**Web based management** IT departments can remotely configure the TD-4100N thanks to the advanced built-in web based management. By logging into the printer using your web browser, the network settings can be configured. Should a problem arise with the printer, the current status and error can also be viewed remotely.

**BR Admin** TD-4100N is also fully compatible with the Brother BR Admin software. This powerful software is a professional management tool that can manage your Brother network-

connected products. It can also be used to view the status of other SNMP compliant network printing devices.

## Professional Software Solutions

**P-touch Editor 5** Supplied as standard, you can create your own custom labels with pixel precision by using this powerful software solution. With features such as support for over 15 barcode protocols, advanced image dithering to print high quality greyscale images, and the ability to link to data contained in Excel spreadsheets for batch printing of labels, any label design is possible.

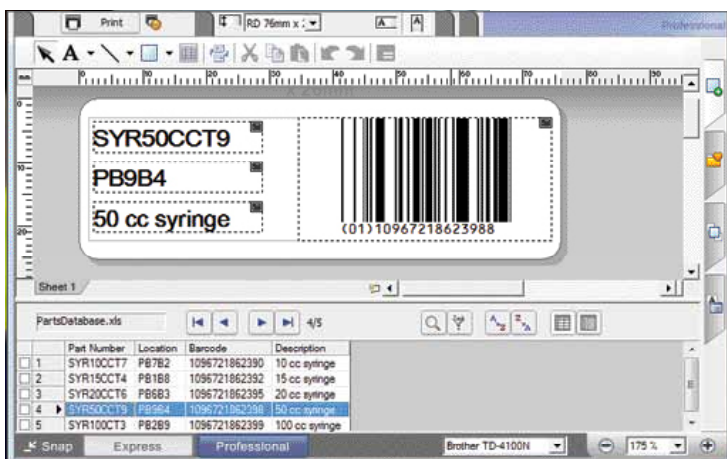
**P-touch Template printing\*** By designing labels on your PC, and then uploading them to the printer's memory, send the text or barcode data to be added to the label, and the machine will create and print the new label as required. You can also print labels without a PC connection - for example connect directly to a barcode scanner to print copies of barcodes.

**b-PAC Software Development Kit** Developed for advanced users such as system integrators, by adding just a few lines of programming code, label printing is possible from many Microsoft® Windows™ applications.

- Create a label template using P-touch Editor 5 and save the file to your PC.
- Using the b-PAC SDK, send the relevant commands to add your text/barcode/images to the label template.
- Issue the print command from your program.
- The b-PAC SDK will then create and print the label containing your information.

More details can be found at <http://www.brother.com/bpac>

**Brother ESC/P printing** Connect to non-windows devices using the RS-232 serial port. By sending simple text commands containing the label format and the text/barcode to be printed, the labelling machine will print the label required. No driver or software needs installing.



By linking to a Microsoft® Excel™ file, merge the data and print labels directly from P-touch Editor 5



Brother RD label rolls are made of high quality paper, and are easy to install

\* May require printer firmware update for this feature